

Introducing - Treeby Terraces -

Where a Connected Community Lifestyle Awaits You.

Enjoy the freedom to build and own your dream two storey terrace home. Situated in a niche pocket of Anketell, Treeby Junction offers the chance to enjoy all the conveniences of this sought-after area.



A large, stylized graphic of a plant with many teardrop-shaped leaves in various shades of green and yellow, centered in the background.

Treeby Terraces

ANKETELL

Modern Boutique Terrace House Living



Treeby Terraces

ANKETELL

A BOUTIQUE DEVELOPMENT
STAGE 1 IS SOLD OUT
STAGE 2 NOW SELLING

For more information please contact

Tom Carlin Team

sales@carlinteam.com.au

0403 198 014



LOCATION AND LIFESTYLE

READY TO UPSCALE YOUR LIFESTYLE

A new boutique estate Treeby Junction is a premium, niche-planned community centred around a neighbourhood shopping precinct.

Secure and sought-after, there's no shortage of things to love about life in Treeby Junction.

With an abundance of options to savour, play and connect, it's the lush, convenient lifestyle you've always wanted without putting a strain on budget.

THE DREAM LIFESTYLE

Immerse yourself in the beauty of the surroundings including the nearby ocean life.





Fremantle
(30 minutes)

Murdoch Hospital
(16 minutes)

Perth CBD
(33km)

Perth Airport
(29 minutes)

Armadale
(21 minutes)

Land for Sale



Family Friendly Bistro and
Town Centre

Treeby Terraces

Treeby Junction
Shopping Centre



Kwinana Beach
(12 minutes)

Marri Park Golf
Course (1km)

LIFESTYLE

Your Livability Matters Most to Us.

Here's how Treeby Junction provides you with a friendly connected lifestyle.

A CONVENIENT LOCATION TO CALL HOME

Treeby Junction is located in the southern Perth suburb of Anketell and falls under the local government area of the City of Kwinana. It is off Thomas Road and just 750m from the Kwinana Freeway intersection.

Seated close to a niche, modern neighbourhood shopping precinct, Treeby Junction is a haven for young families and professionals who desire a home well located yet away from the hustle and bustle of the city.

PRIME REAL ESTATE

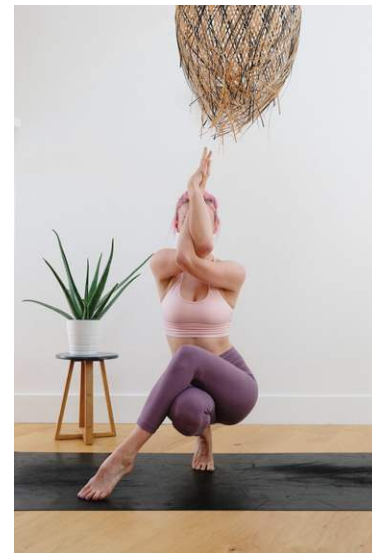
Given its convenient location and close proximity to quality amenities, buying a property in Treeby Junction is a worthy future investment. Whether you like the idea of relaxing at the beach, exploring the local sites, or just winding down in your new home, we've got your lifestyle needs covered.

Perfectly positioned to the nearby bustling town centre of Kwinana, everything you need for a connected and cosmopolitan lifestyle is close to home.

YOUR HOME

Nestled within

The vibrant Treeby Junction Town Centre precinct, construction is well underway — The main street will feature great local amenity, the Shopping Centre anchored by a full-line Woolworths supermarket and supported by committed specialty retailers including BWS, Greg's Pharmacy, Lotterywest Newsagency, and numerous food outlets including Jamaica Blue Café, Domino's and Zambrero's. A medical centre, gym and dentist are also pre-committed to the Centre.






AN INSPIRED AND UNIQUE TERRACE HOME OFFERING

Only 6 terrace homes available in Stage 2, now is your chance to own a contemporary home tailored to your lifestyle and budget. Just 30 minutes from Fremantle and 33 km from Perth CBD, and around 12 minutes from the ocean, the location truly offers a modern, connected lifestyle

TAKE A SNEAK PEEK

Enjoy the freedom to own your dream home. Modern design, with an exceptional selection of fixtures and fittings.



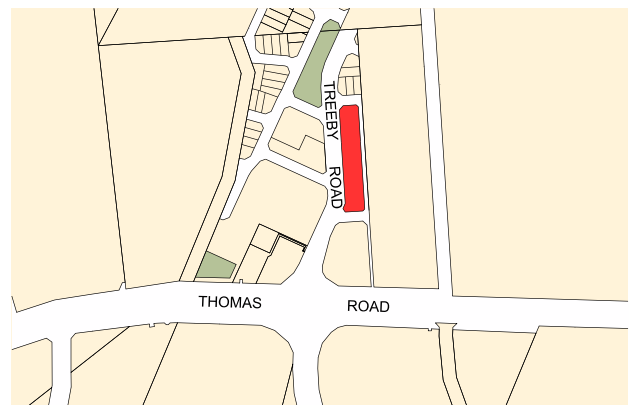
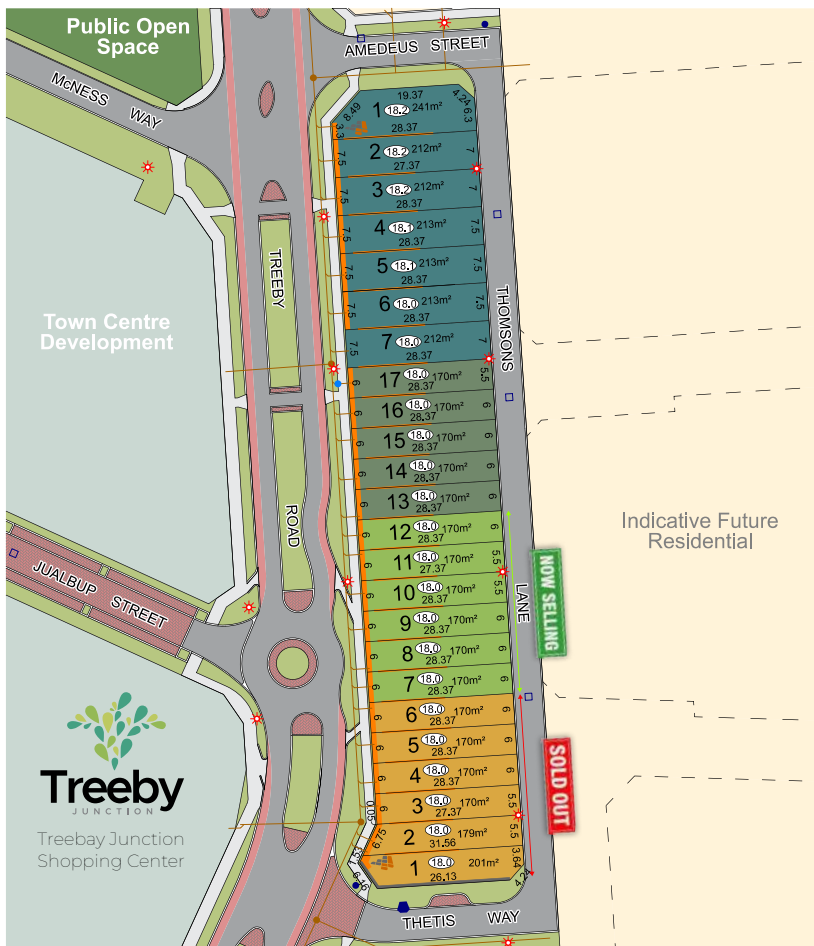






Treeby Terraces

STAGING PLAN



	Stage 1 Release		Easement
	Stage 2 Release		Retaining Wall
	Stage 3 Release		Footpaths
	Stage 4 Release		Lot Level
	Future Residential		Power Dome
	Future Commercial/Community Purpose		Street Light
			Water Hydrant
			Sewer Housing Connection/ Manhole
			Drainage Manhole/ Side Entry Pit
			Gully Pit

All Landscaping and Engineering is subject to change and final design specifications. All dimensions and areas are subject to survey. The particulars on this brochure are supplied for identification purposes only and shall not be taken as a representation or warranty on the part of the vendor or its agents. Authorities should be consulted when services are connected to the lot. Easements are shown for information only. All marketing, sales, services and associated easements are shown exaggerated for legibility.

Treeby Terraces

6M



Area Table

GARAGE	41.27m ²
GROUND FLOOR	65.59m ²
PORCH	4.69m ²
FIRST FLOOR	71.55m ²
BALCONY	2.30m ²

BED

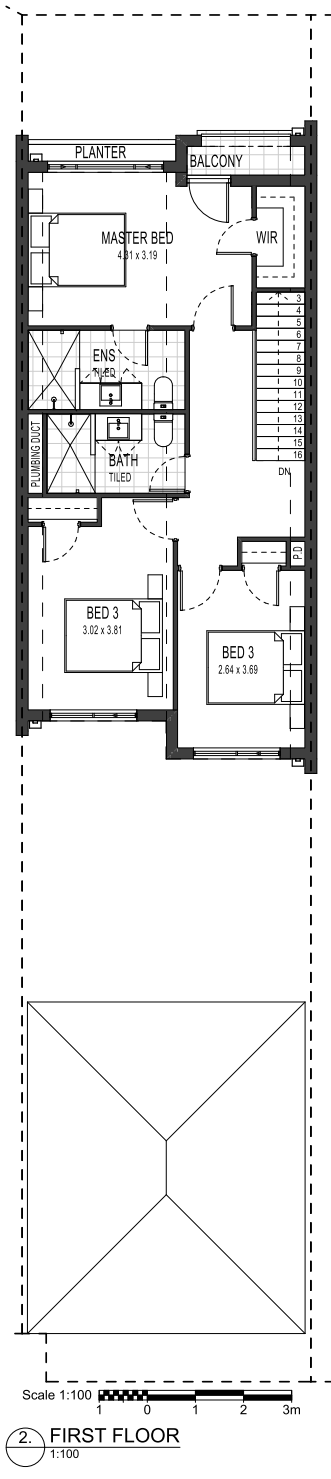
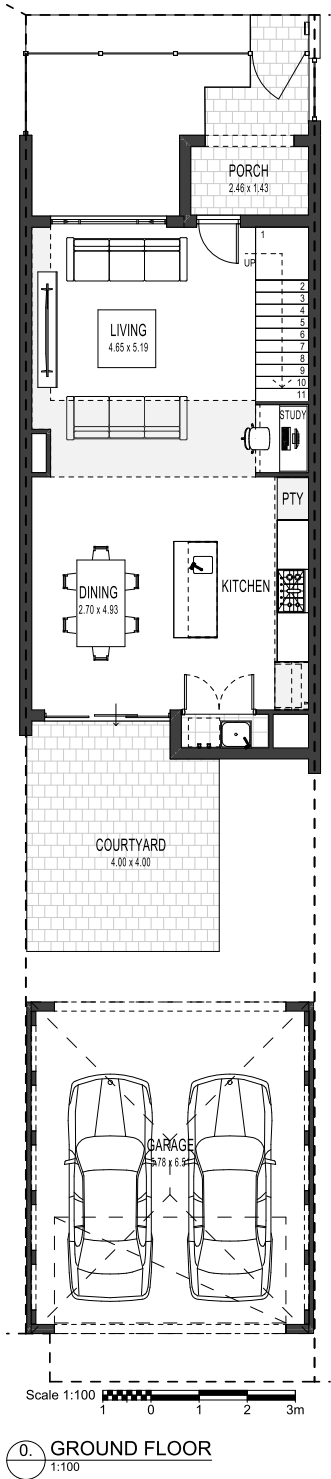
3

BATH

2

CAR

2





SPECIFICATIONS



DISCLAIMER: The information above should be used as a guide only. The Seller and companies related to it and its Agents do not warrant the accuracy of the information or illustrations and do not accept any liability for any error or discrepancy in that information. While the Seller believes that the floor plans and specifications are accurate at time of publication, information is subject to change and The Seller disclaims any liability for any loss or damage which may arise from any person or party acting in reliance upon this information.

Treeby Terraces

DUNE SCHEME



Stone	Q Stone Blanc Naturel - throughout
Cabinetry	Polytec Blossom White Matt - kitchen underbench cupboards/pantry/fridge overheads & laundry Polytec Verdelho Smooth - kitchen overheads above the cooktop only Polytec Plantation Ash Woodmatt - ensuite & bathroom
Cabinet Handles	Hafele 106.69.433 to cupboards & doors. Fingergrip to overheads where applicable
Tiling	Rectified Porcelain Portland Bianco 298x600 tile floor & wall to laundry, bathroom & ensuite including balcony floor Orion Bianco Satin Handmade subway laid vertical stackbond - kitchen splashback Kasko Handmade Finger Jumbo White Mosaic 300x300 laid vertical - kitchen splashback (upgrade option)
GF Flooring	Vinyl plank in European Oak - main living areas
FF Flooring	Sixth Avenue Carpet 514 Light Stone - staircase, upper floor hallway and all bedrooms including robes
Internal Painting	Dulux Casper White Quarter

Treeby Terraces

OAK SCHEME



Stone	Q Stone Carrara Grigio - throughout
Cabinetry	<p>Polytec Blossom White Matt - kitchen underbench cupboards/pantry/fridge overheads & laundry</p> <p>Polytec Ferro Matt - kitchen overheads obe the cooktop only</p> <p>Polytec Notaio Walnut Woodmatt - ensuite & bathroom</p>
Cabinet Handles	Hafele 106.69.433 to cupboards & doors. Fingergrip to overheads where applicable
Tiling	<p>Rectified Porcelain Capri Taupe 298x600 tile floor & wall to laundry, bathroom & ensuite including balcony floor</p> <p>Orion Bianco Satin Handmade subway laid vertical stackbond - kitchen splashback</p> <p>Kasko Handmade Finger Jumbo White Mosaic 300x300 laid vertical - kitchen splashback (upgrade option)</p>
GF Flooring	Vinyl plank in Mocha Spotted Gum - main living areas
FF Flooring	Sixth Avenue Carpet 755 Moonstone - staircase, upper floor hallway and all bedrooms including robes
Internal Painting	Dulux Feather Soft



MEET CACHET HOMES


The selected builder is Cachet Homes - an award-winning WA home builder known for quality, fixed pricing and custom design selections. Cachet Homes bring great credibility to this fixed-price turnkey project.



Cachet Homes understand what people want when building with a custom home builder. Here's 6 reasons to choose Cachet Homes, with information on how we deliver on these commitments to you.

- Your locally based custom home builder
- Exceptional design of custom homes
- Quality construction & craftsmanship
- Clear upfront pricing and great value
- Personal service and clear communication
- Reputable, award-winning builder

Cachet Homes is a multiple award winner in Western Australia through both the Master Builders Association and Housing Industry Association. Recognition and awards from associations and peers in the industry is the best demonstration of our slogan... Quality that Attracts Admiration.



For more information please contact

Tom Carlin Team

carlin
TEAM

sales@carlinteam.com.au

0403 198 014


Treeby
JUNCTION

